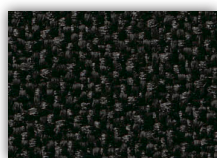


TAPIZADO A TU GUSTO

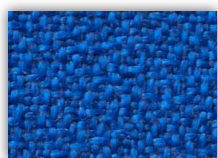
HAZ QUE TU SILLA FORME PARTE DE TU ESTRATEGIA DE BRANDING

Tejido BALI

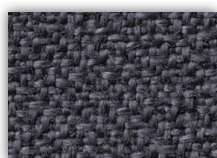
Confort y durabilidad



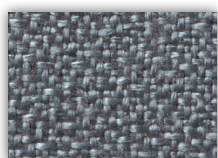
BALI840



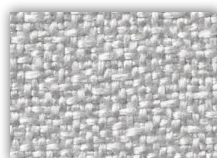
BALI229



BALI600



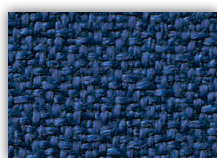
BALI220



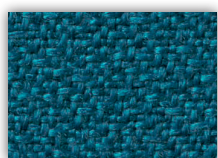
BALI40



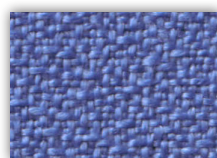
BALI10



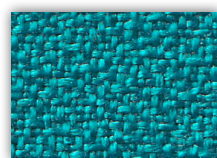
BALI200



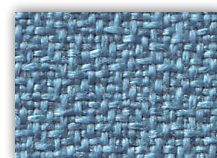
BALI429



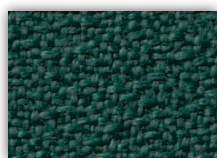
BALI261



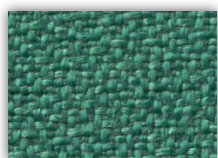
BALI39



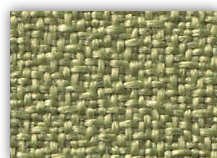
BALI13



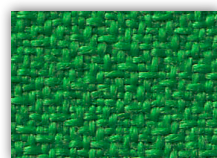
BALI426



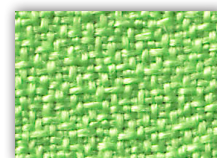
BALI456



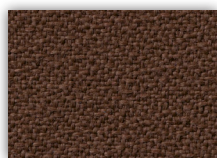
BALI552



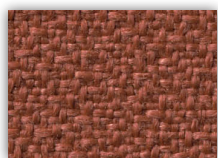
BALI15



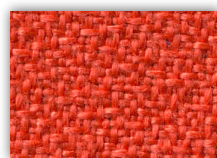
BALI22



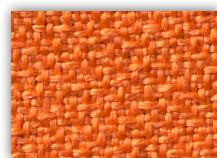
BALI463



BALI363



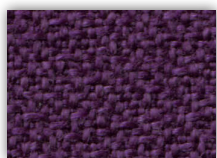
BALI305



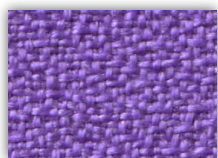
BALI308



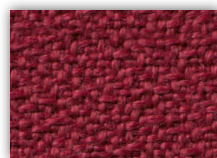
BALI100



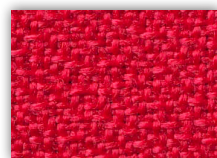
BALI760



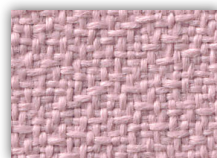
BALI82



BALI933



BALI350



BALI710



Clase ignífuga
EN1021-12006



Solidez a la luz
EN ISO105-B025



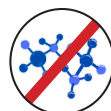
SVHC 155 químicos
EC n°1907/2006



Abrasión Martindale
EN14465:2004+A12007 (12kPa)
N° de ciclos:50.000



Solidez al rozamiento
EN ISO105-X12



Ausencia de Azocompuestos, Ftalatos y DMF

Similpiel

Distinción y limpieza



SP840



SP229



SP600



SP220



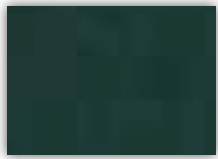
SP40



SP10



SP25



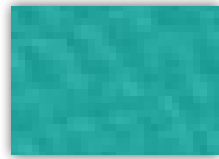
SP426



SP200



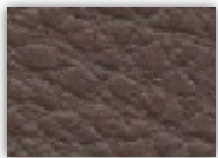
SP261



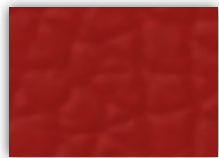
SP39



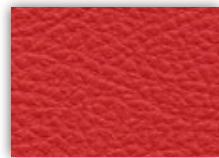
SP22



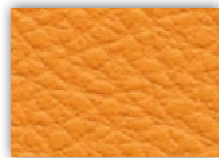
SP463



SP933



SP350



SP308



SP100



SP363



SP760



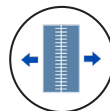
SP24



Clase ignífuga
EN1021-12014



Solidez a la luz
EN ISO105-B02: ≥5



Resistencia al deslizamiento de los hilos de la costura
ISO13936-2



Abrasión Martindale
ISO 5470-2 (12kPa)
Nº de ciclos: >120.000



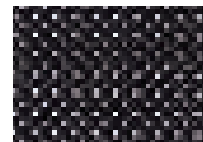
Resistencia al desgarro
ISO 4674-12003



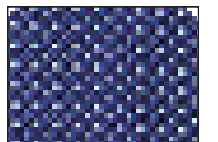
Antibacteriano
ISO 22196:2011

Malla

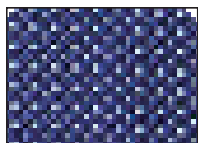
Temperatura óptima



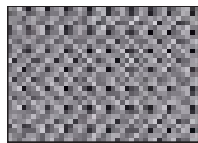
MALLANE



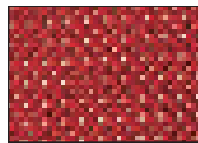
MALLAAZ



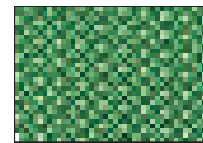
MALLABL



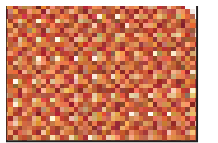
MALLAGR



MALLARJ



MALLAVR



MALLANA



Abrasión Martindale
BS 5690 800g (12kPa)
Nº de ciclos: >30.000



Pilling
ISO 12945-2



Solidez a la luz
UNE-EN ISO105-B02